

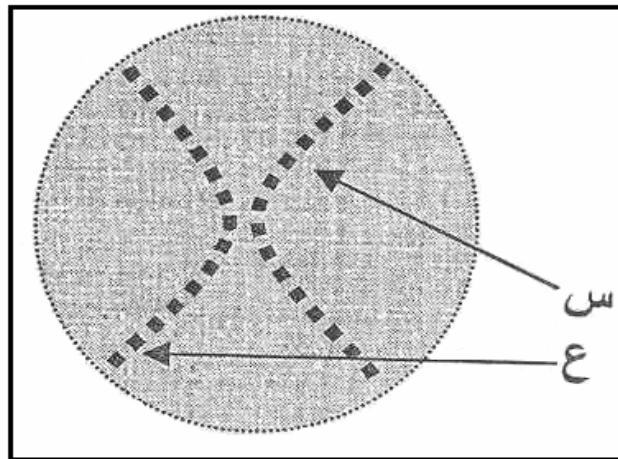
2011 - 2010 :			
3:	:	:	2:
/ :			

2011 -02 - 15: :

(10) :

1 :

ADN



1 :

:

- 1

- 2

2:

2

-

A T A C C G T C T G A G

.2

- 3

- 4

.TGCA

- 5

C + G A + G/C + T

- 6

. 300 =

- 7

(05) :

ADN

2		1	
$8^{-10} \cdot 6.6$ ADN 2.10		$8^{-10} \cdot 4.3$ ADN 1.38	
$8^{-10} \cdot 12.6$ ADN 2.05		$8^{-10} \cdot 7.1$ ADN 1.16	

ADN - 1

- 2

-

- 3

ADN -

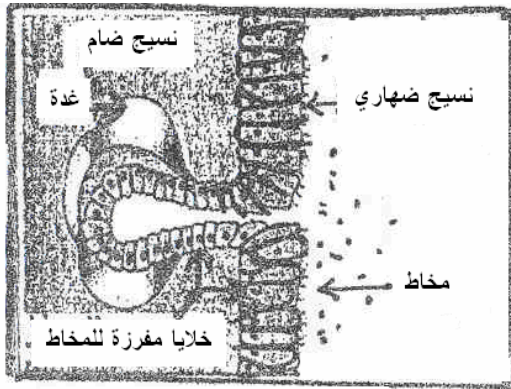
ADN - 4

ADN - 5

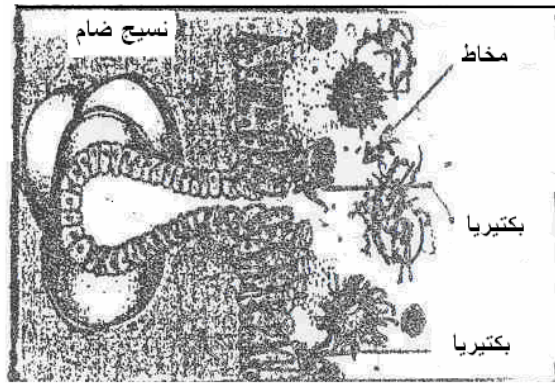
(05) :

- 1

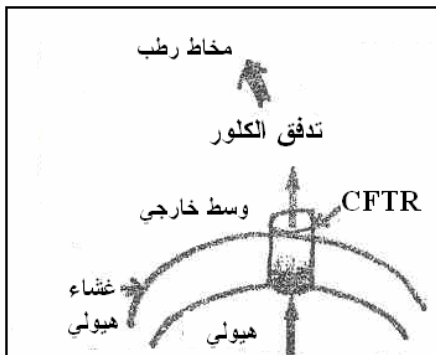
- 2



ظهارية رئوية لشخص سليم



ظهارية رئوية لشخص مصاب



- 3

) CL (.CFTR

: CFTR (7 CFTR) - 4

ATCATTGGTTTG..... ATCATCTTTGGTTTG.....

..... Iso - Iso - Gly - Val Iso - Iso - Phe - Gly - Val

506 - 507 - 508 -509(..... 506 - 507 - 508 - 509 -510...

:

- 1

- 2

CFTR - 3

[http:// www.onefd.edu.dz](http://www.onefd.edu.dz) :

.....