

2011 - 2010 :			
03 :	:	:	2 :
			/ :

2011 -02 - 15: :



(04) :

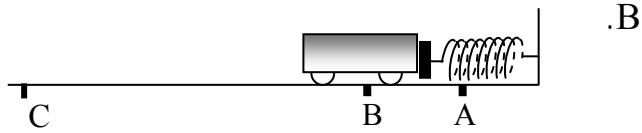
.A

$K = 100 \text{ N / m}$

- 1

()

. $m = 10 \text{ g}$



. V_B

AB

. (+) /

B A (+) /

B

.A

. $X = AB = 2 \text{ cm}$

V_B

/ →

f :

. $BC = 2,5 \text{ m}$

BC

- 2

C

. () /

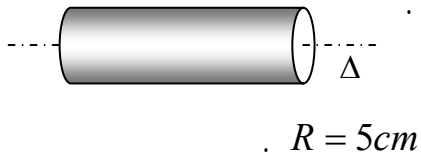
() /

/ →

f

/

(04) :



$m = 200\text{ g}$

Δ

(\vec{F}_1, \vec{F}_2)

(tr / min)	
t_2	t_1
1000	0

t_2

t_1

- 1

t_2

- 2

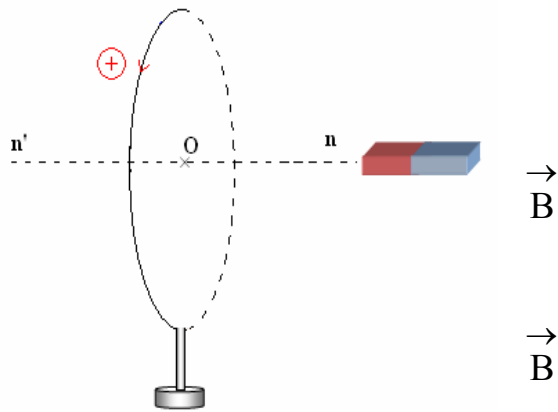
J_Δ

- 3

600

- 4

(04) :



1000

$0,01\text{ m}^2$

- 1

O

ϕ_1

- 2

$B = 0,5\text{ T}$

- 3

ϕ_2

/

$\Delta\phi$

/

/ \Rightarrow

$\Delta t = 0,70\text{ s}$

\vec{B}_1

- 4

(04) :

$\theta (^\circ C)$	0	100	200	300	400
$P (bar)$	0,94	1,29	1,64	1,98	2,33
$T (^\circ K)$					

- 1

- 2

1cm \rightarrow 100°K 1cm \rightarrow 0,25bar : P = f(T) - 3

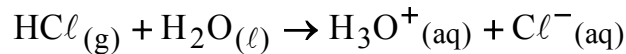
- 4

. $\theta = 600 ^\circ C$ - 5

(04) :

HCl_(g)

S



$\sigma = 63,8 \text{ ms/m}$

H₃O⁺ - 1

. Cl⁻

$\lambda_{H_3O^+}$: σ - 2

[H₃O⁺] λ_{Cl^-}

- 3

C - 4

V = 5L HCl_(g) V_{HCl} - 5

.S

$\lambda_{Cl^-} = 7,63 \text{ ms} \cdot \text{m}^2 \cdot \text{mol}^{-1}$ $\lambda_{H_3O^+} = 35 \text{ ms} \cdot \text{m}^2 \cdot \text{mol}^{-1}$ $V_M = 24 \text{ L} \cdot \text{mol}^{-1}$:

.....